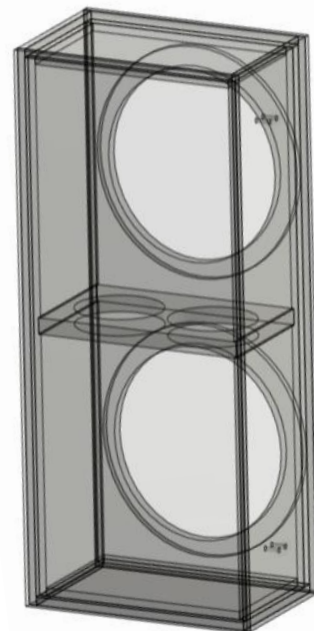
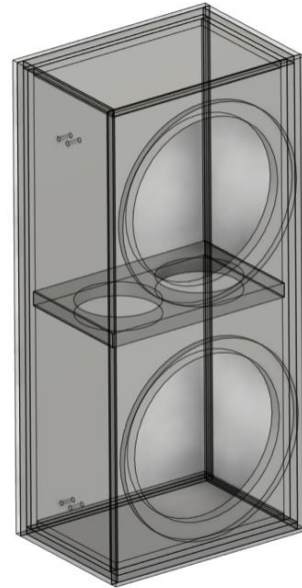
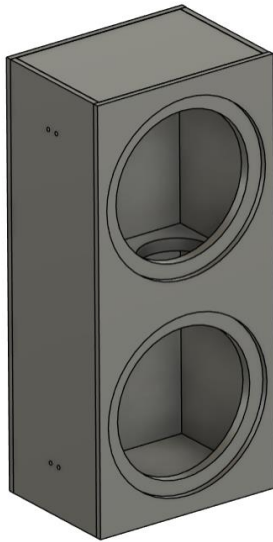




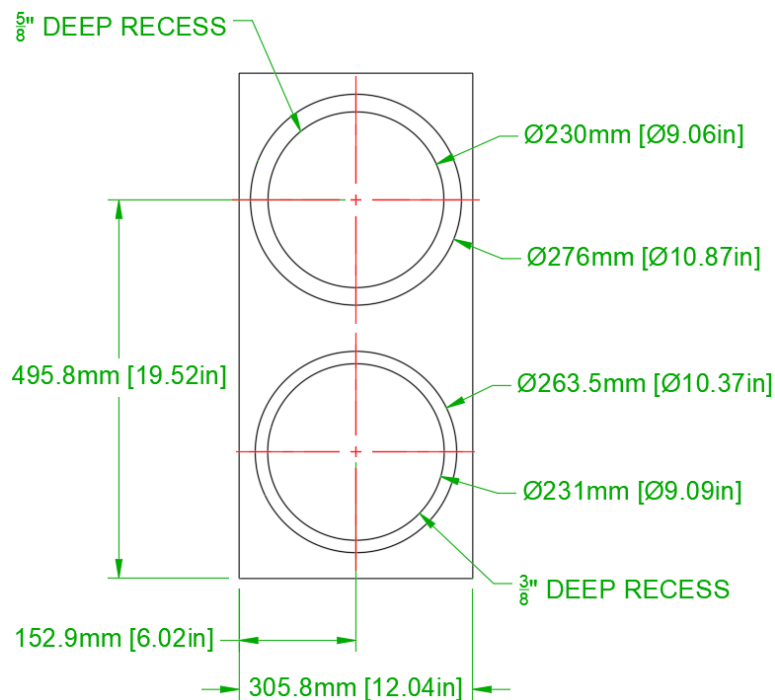
CREATIVE SOUND SOLUTIONS

SLIMLINE BASS MODULE
CSS SDX10 + APR10

11-11-2024



FRONT VIEW

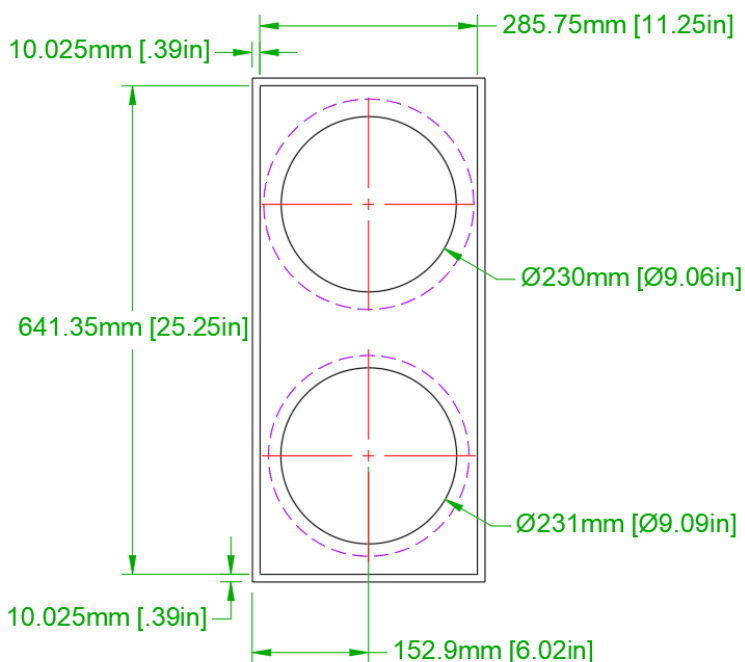


FRONT PANEL

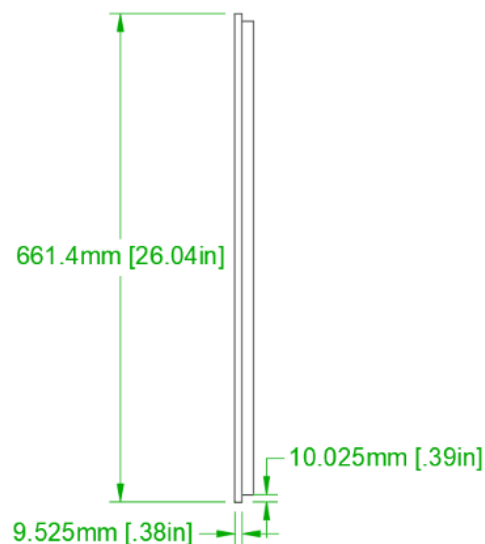
1" thick



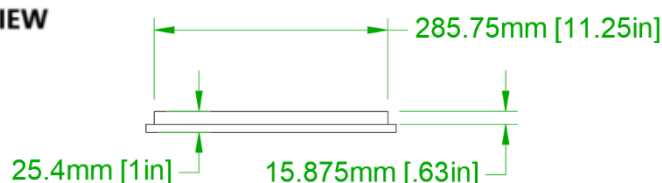
BACK VIEW



SIDE VIEW



TOP VIEW

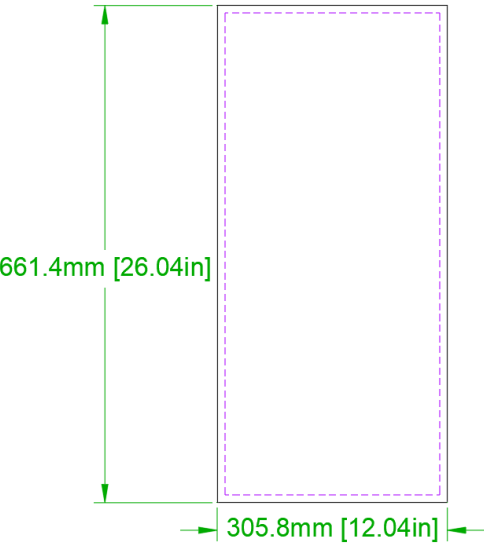


NOTES:
 1) USES CSS SDX10 SUBWOOFER AND CSS APR10 PASSIVE RADIATOR
 2) DRAWN WITH 1" [25.4MM] MATERIAL FOR FRONT & 3/4" [19.05MM] MATERIAL FOR BACK, TOP, BOTTOM, SIDE AND BRACE. QUALITY PLYWOOD OR MDF RECOMMENDED
 3) LINE WALLS WITH FIBERGLASS, WOOL, OR COTTON FELT



SLIMLINE BASS MODULE
 11-11-2024
 DESIGNED BY D POINSETT/ K ARMES
 ©2017-18 CREATIVE SOUND SOLUTIONS, LLC

FRONT VIEW

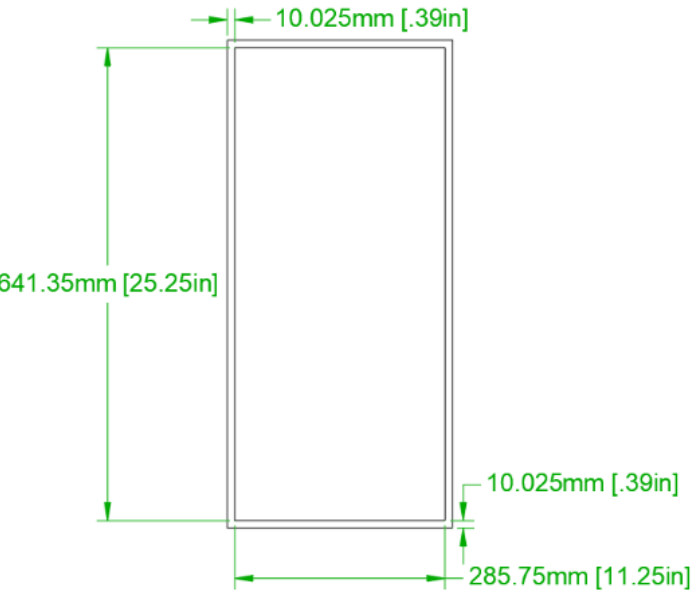


BACK PANEL

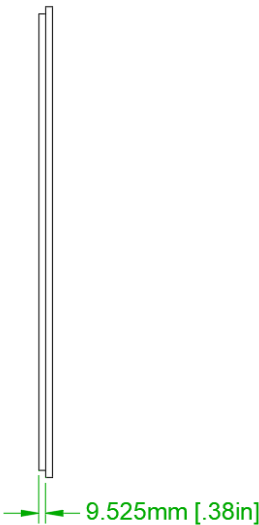
3/4" thick



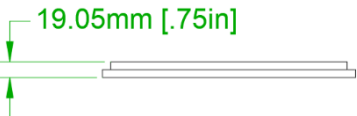
BACK VIEW



SIDE VIEW



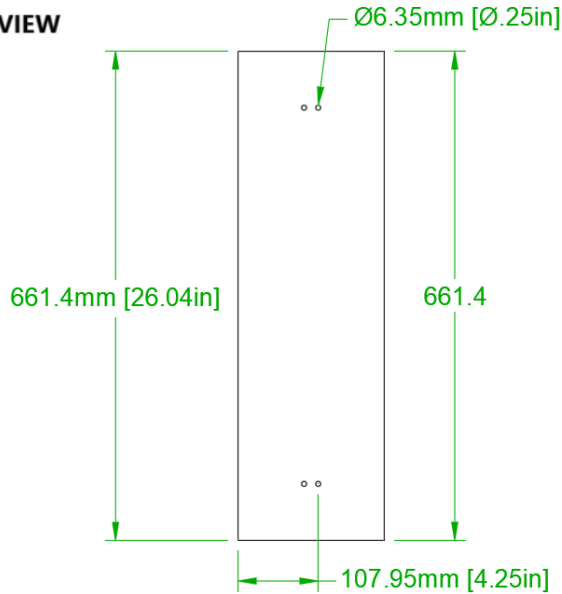
TOP VIEW



NOTES:
1) USES CSS SDX10 SUBWOOFER AND CSS APR10 PASSIVE RADIATOR
2) DRAWN WITH 1" [25.4MM] MATERIAL FOR FRONT & 3/4" [19.05MM] MATERIAL FOR BACK, TOP, BOTTOM, SIDE AND BRACE. QUALITY PLYWOOD OR MDF RECOMMENDED
3) LINE WALLS WITH FIBERGLASS, WOOL, OR COTTON FELT

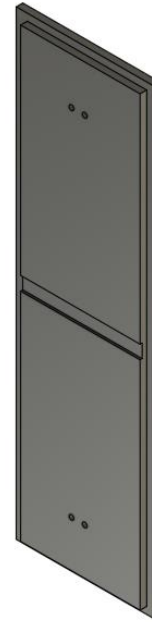


FRONT VIEW

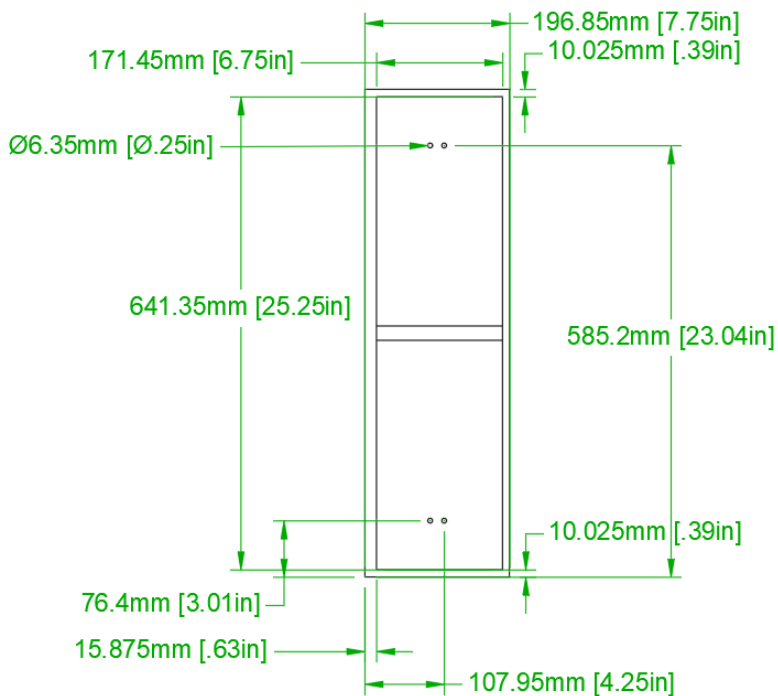


LEFT PANEL

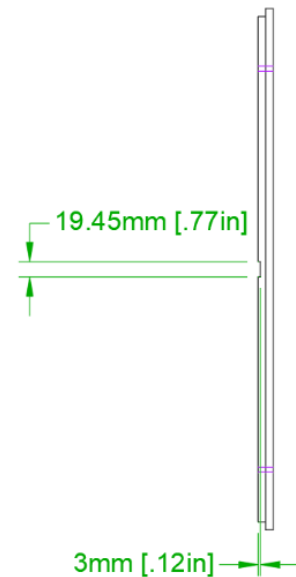
3/4" thick



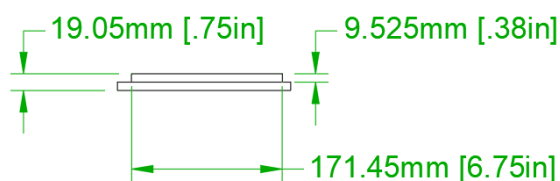
BACK VIEW



SIDE VIEW



TOP VIEW



NOTES:

- 1) USES CSS SDX10 SUBWOOFER AND CSS APR10 PASSIVE RADIATOR
- 2) DRAWN WITH 1" [25.4MM] MATERIAL FOR FRONT & 3/4" [19.05MM] MATERIAL FOR BACK, TOP, BOTTOM, SIDE AND BRACE. QUALITY PLYWOOD OR MDF RECOMMENDED
- 3) LINE WALLS WITH FIBERGLASS, WOOL, OR COTTON FELT



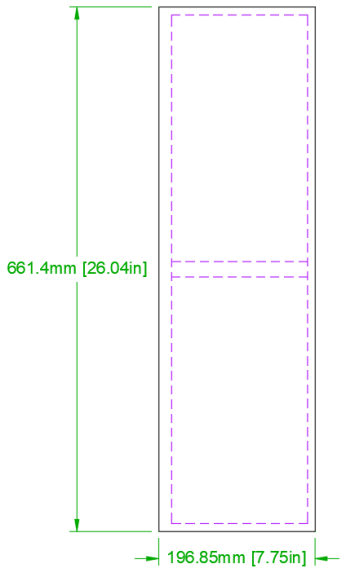
SLIMLINE BASS MODULE

11-11-2024

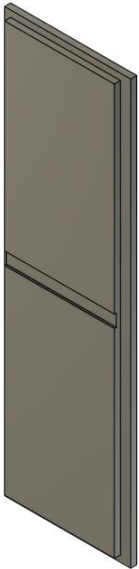
DESIGNED BY D POINSETT/ K ARMES

©2017-18 CREATIVE SOUND SOLUTIONS, LLC

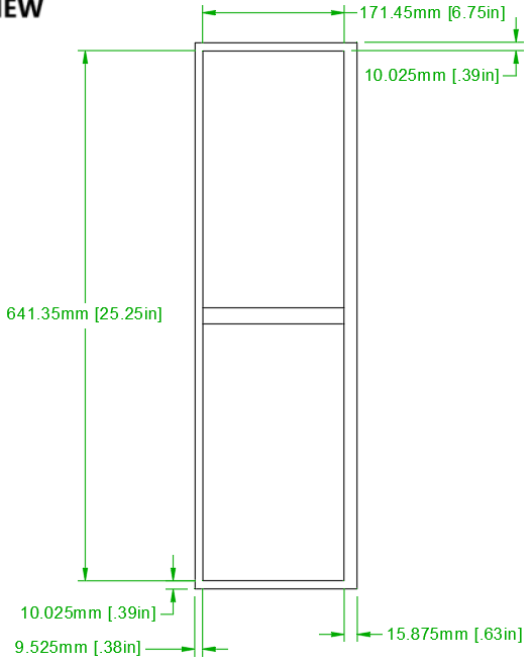
FRONT VIEW



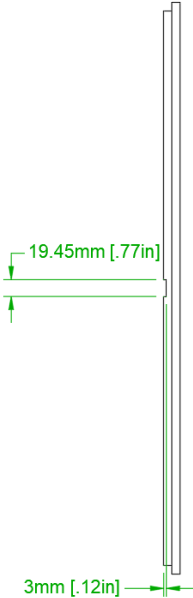
RIGHT PANEL
3/4" thick



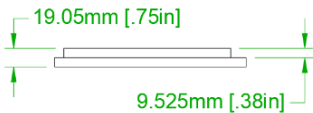
BACK VIEW



SIDE VIEW



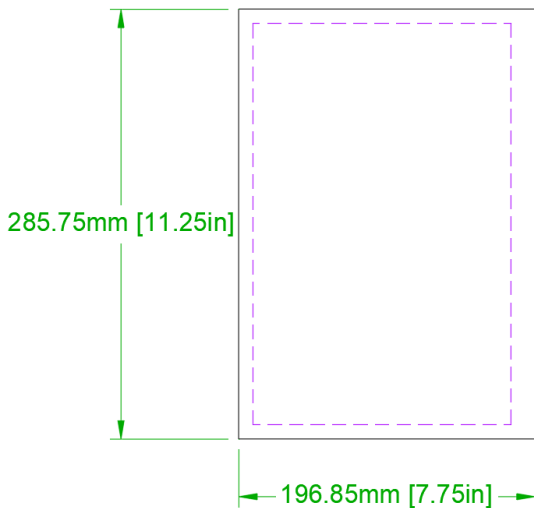
TOP VIEW



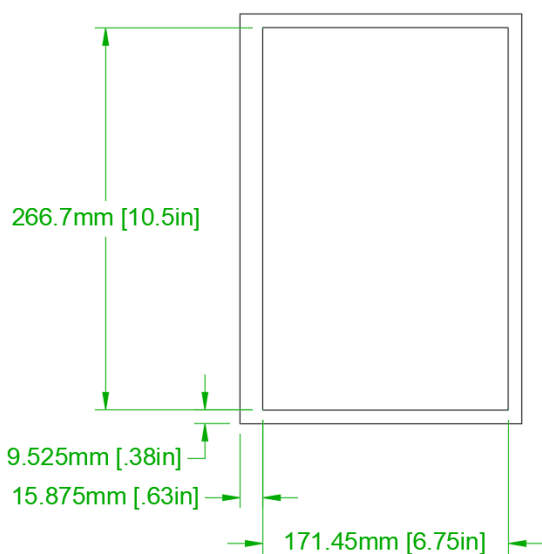
NOTES:
1) USES CSS SDX10 SUBWOOFER AND CSS APR10 PASSIVE RADIATOR
2) DRAWN WITH 1" [25.4MM] MATERIAL FOR FRONT & 3/4" [19.05MM] MATERIAL FOR BACK, TOP, BOTTOM, SIDE AND BRACE. QUALITY PLYWOOD OR MDF RECOMMENDED
3) LINE WALLS WITH FIBERGLASS, WOOL, OR COTTON FELT



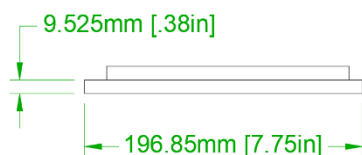
FRONT VIEW



BACK VIEW

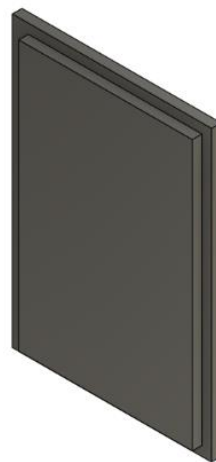


TOP VIEW

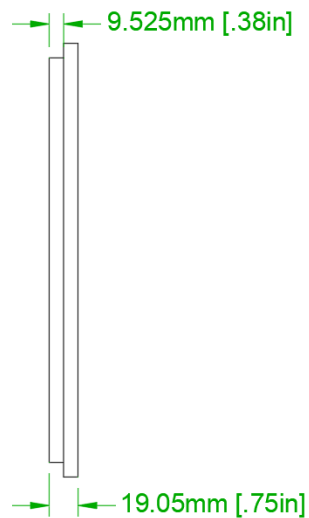


TOP & BOTTOM PANELS

3/4" thick



SIDE VIEW



NOTES:

- 1) USES CSS SDX10 SUBWOOFER AND CSS APR10 PASSIVE RADIATOR
- 2) DRAWN WITH 1" [25.4MM] MATERIAL FOR FRONT & 3/4" [19.05MM] MATERIAL FOR BACK, TOP, BOTTOM, SIDE AND BRACE. QUALITY PLYWOOD OR MDF RECOMMENDED
- 3) LINE WALLS WITH FIBERGLASS, WOOL, OR COTTON FELT



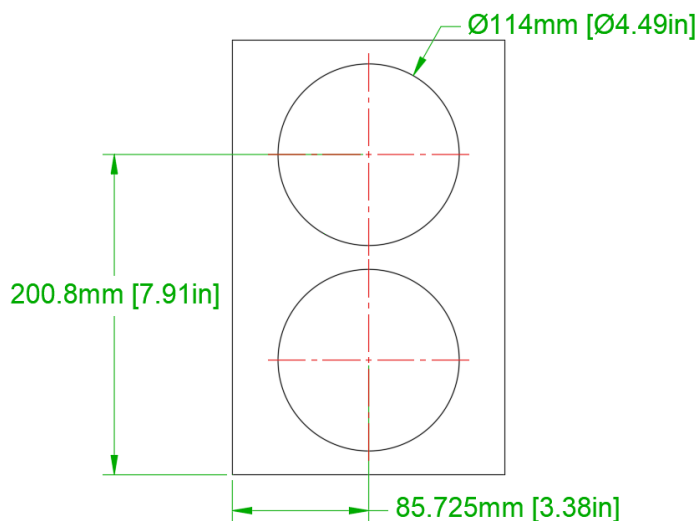
SLIMLINE BASS MODULE

11-11-2024

DESIGNED BY D POINSETT/ K ARMES

©2017-18 CREATIVE SOUND SOLUTIONS, LLC

FRONT VIEW

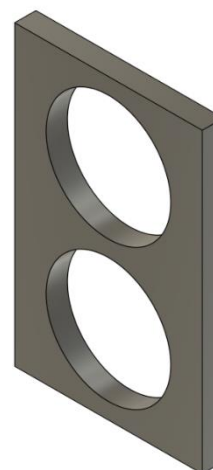


TOP VIEW

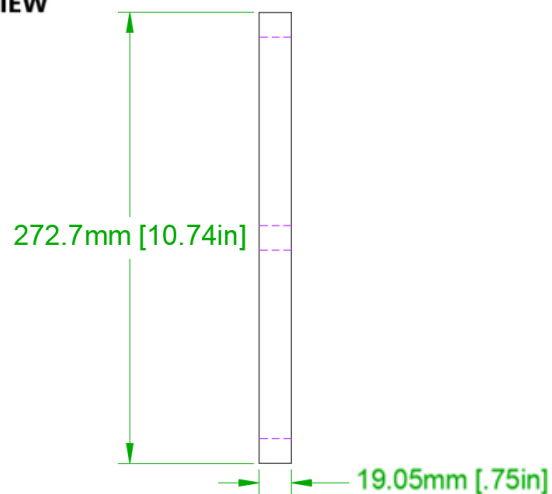


BRACE

3/4" thick



SIDE VIEW

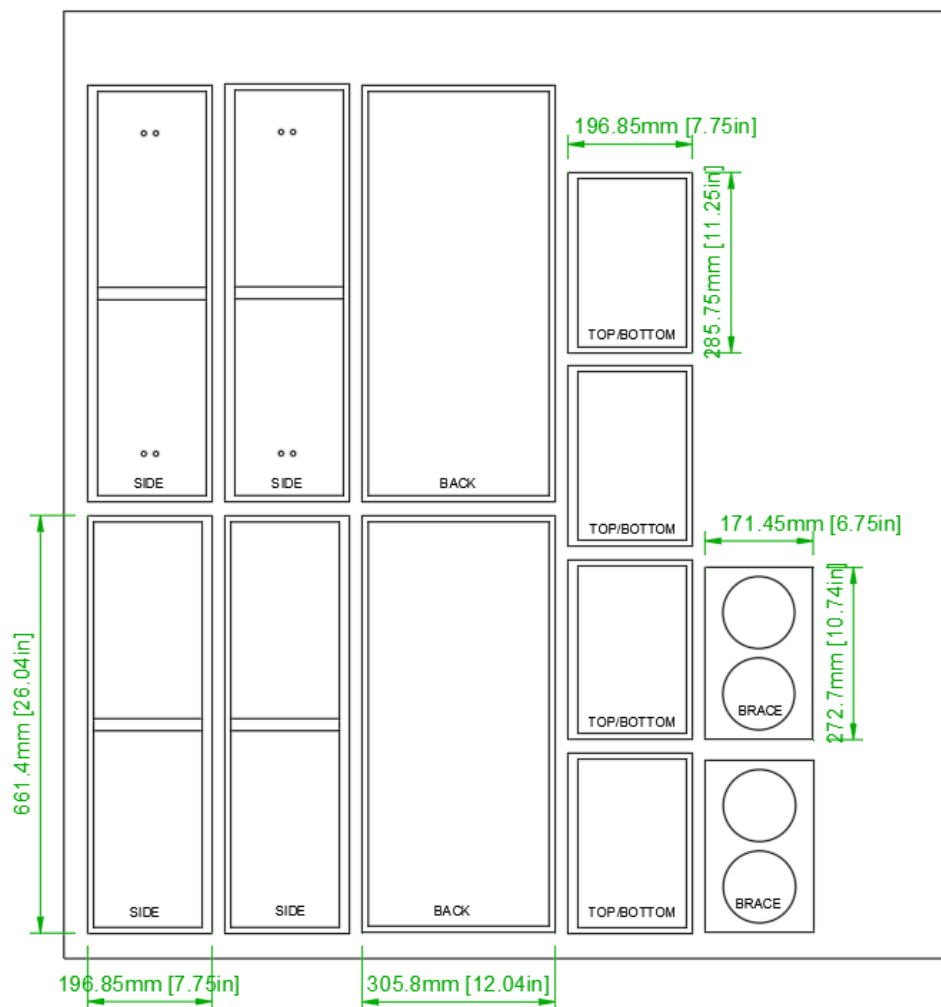
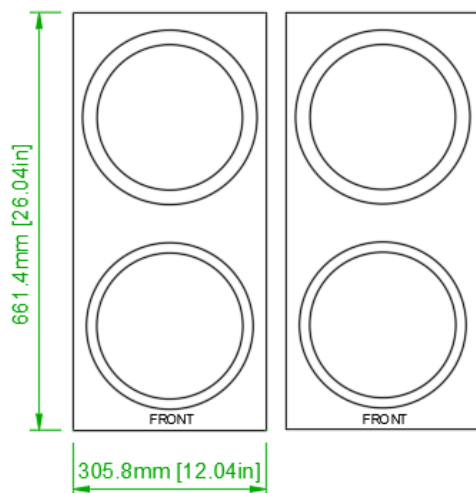


NOTES:
 1) USES CSS SDX10 SUBWOOFER AND CSS APR10 PASSIVE RADIATOR
 2) DRAWN WITH 1" [25.4MM] MATERIAL FOR FRONT & 3/4" [19.05MM] MATERIAL FOR BACK, TOP, BOTTOM, SIDE AND BRACE. QUALITY PLYWOOD OR MDF RECOMMENDED
 3) LINE WALLS WITH FIBERGLASS, WOOL, OR COTTON FELT

SLIMLINE BASS MODULE
 11-11-2024
 DESIGNED BY D POINSETT/ K ARMES
 ©2017-18 CREATIVE SOUND SOLUTIONS, LLC

3/4" thick

1" thick



NOTES:

- 1) 4' X 5' SUGGESTED CUT OUT. 1" [25.4MM] FOR FRONT PANEL. 3/4" [19.05MM] FOR BACK, SIDE, TOP, BOTTOM AND BRACE. QUALITY PLYWOOD OR MDF RECOMMENDED
- 2) 1/4" [6.4MM] TRIM AND KERF
- 3) BEFORE CUTTING, MEASURE THE ACTUAL MATERIAL'S THICKNESS AND ADJUST PANEL SIZES AS REQUIRED



SLIMLINE BASS MODULE
11-11-2024
DESIGNED BY D POINSETT/ K ARMES
© 2017-18 CREATIVE SOUND SOLUTIONS, LLC

